



## Needham Terrace, NW2

Freehold - £599,950

For Sale solely via Camerons Stiff is this quaint and characterful three-bedroom terraced house, spanning 848 sq ft over two floors. The property offers an exciting opportunity to acquire a Freehold house that's only a short distance from the coveted Gladstone Park.

The Ground Floor offers a sociable and pragmatic arrangement, featuring an open-plan kitchen and living space with direct access to the 16ft rear garden. The shower room is situated at the rear of the property, maximising the size of the three bedrooms on the First Floor. The property does require some refurbishment, enabling a prospective purchaser to 'stamp their mark' on a lovely house. It's worth noting that the house has a sizeable front garden, also.

Needham Terrace is a quiet street in Cricklewood with the varied amenities of Cricklewood Broadway and Willesden Green a short distance away. Transport via Cricklewood Station (Thameslink) provides easy access into Central London.

Early viewing is thoroughly recommended.



020 7328 2828

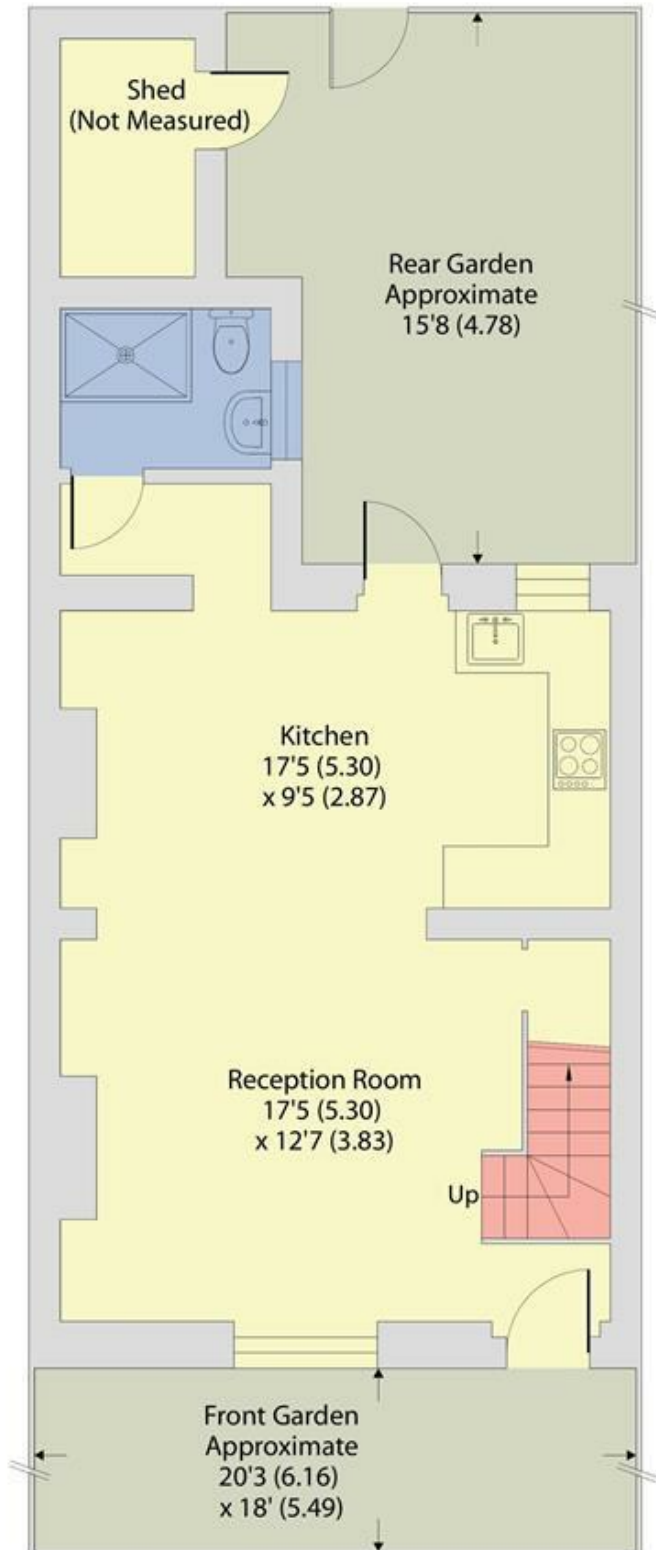
[enquiries@cameronsstiff.co.uk](mailto:enquiries@cameronsstiff.co.uk)

[cameronsstiff.co.uk](http://cameronsstiff.co.uk)

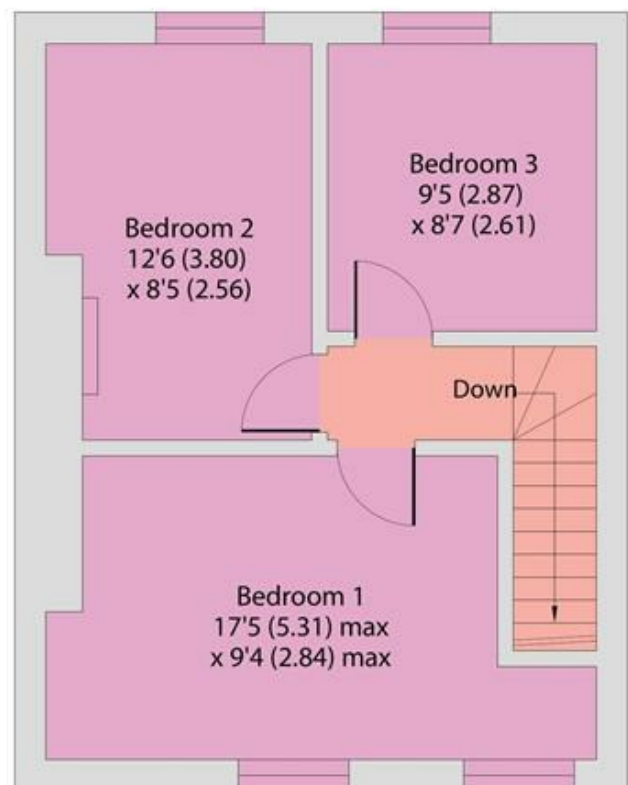
## Needham Terrace, London, NW2

Approximate Area = 848 sq ft / 78.7 sq m

For identification only - Not to scale



GROUND FLOOR



FIRST FLOOR

EPC: C

Ref: 19614595



Floor plan produced in accordance with RICS Property Measurement 2nd Edition, Incorporating International Property Measurement Standards (IPMS2 Residential). © nichecom 2026. Produced for Camerons Stiff & Co. REF: 1400481

